

The following will help you install the powercat pointer on your system. These instructions are written for all MS Windows operating systems.

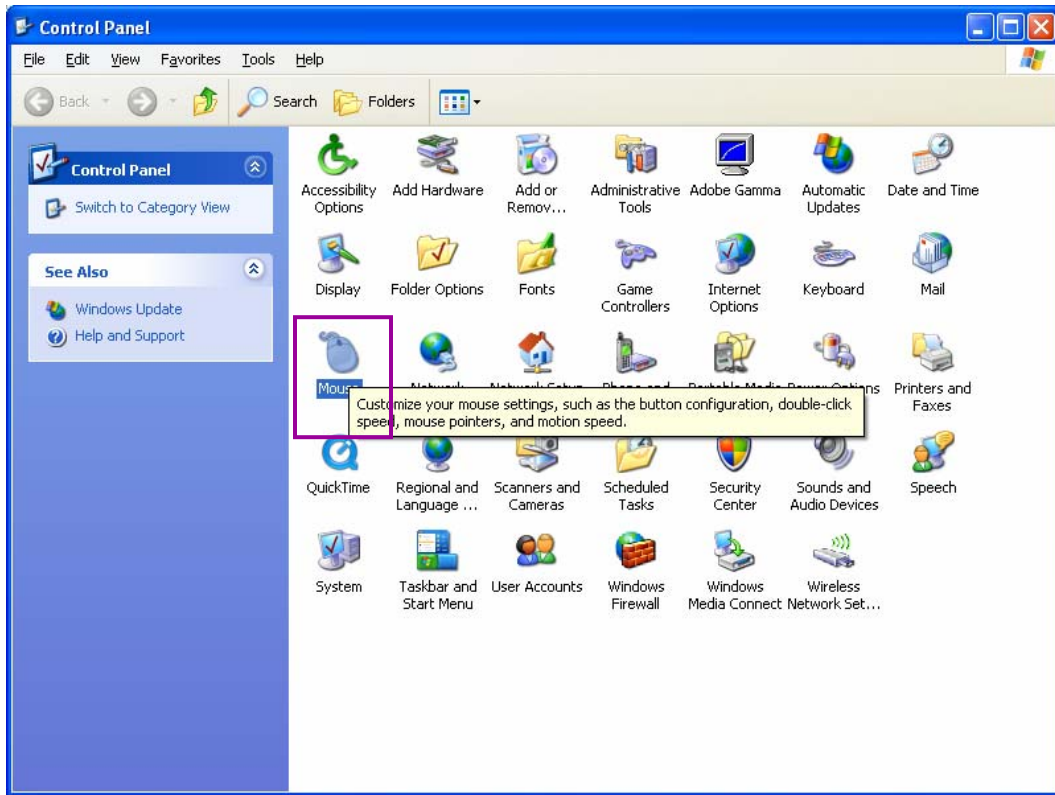
Place the Powercat Pointer.ANI file (located in the downloaded zip file) in the following directory:

C:/windows/cursors

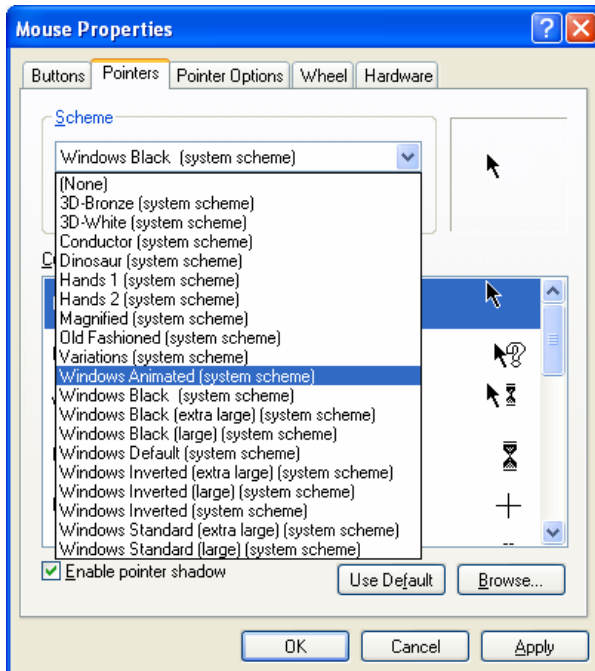
Go to your control panel, found by clicking on your Start button / settings / control panel



In the CONTROL PANEL you should have a MOUSE ICON. Double click on this icon to open it. All may be a little different depending on what kind of mouse you're using. What you're looking for is a tab titled POINTERS.



First ensure that you have set up your mouse to use WINDOWS ANIMATED (system scheme). Locate this from the drop down list found in the SCHEME SECTION of this window.



Next find the cursor which is associated with the "busy" function. High light that line with your cursor and select browse. From the browse file, select the Powercat Pointer that you placed in this directory earlier.

